

## RESEARCH REPORT

# A low-sugar diet enhances *Drosophila* body size in males and females via sex-specific mechanisms

Jason W. Millington<sup>1</sup>, Puja Biswas<sup>1</sup>, Charlotte Chao<sup>1,\*</sup>, Yi Han Xia<sup>1,\*</sup>, Lianna W. Wat<sup>1</sup>, George P. Brownrigg<sup>1,\*</sup>, Ziwei Sun<sup>1,\*</sup>, Paige J. Basner-Collins<sup>1,\*</sup>, Ramon I. Klein Geltink<sup>2</sup> and Elizabeth J. Rideout<sup>1,†</sup>

## ABSTRACT

In *Drosophila*, changes to dietary protein elicit different body size responses between the sexes. Whether these differential body size effects extend to other macronutrients remains unclear. Here, we show that lowering dietary sugar (0S diet) enhanced body size in male and female larvae. Despite an equivalent phenotypic effect between the sexes, we detected sex-specific changes to signalling pathways, transcription and whole-body glycogen and protein. In males, the low-sugar diet augmented insulin/insulin-like growth factor signalling pathway (IIS) activity by increasing insulin sensitivity, where increased IIS was required for male metabolic and body size responses in 0S. In females reared on low sugar, IIS activity and insulin sensitivity were unaffected, and IIS function did not fully account for metabolic and body size responses. Instead, we identified a female-biased requirement for the Target of rapamycin pathway in regulating metabolic and body size responses. Together, our data suggest the mechanisms underlying the low-sugar-induced increase in body size are not fully shared between the sexes, highlighting the importance of including males and females in larval studies even when similar phenotypic outcomes are observed.

**KEY WORDS:** Sex difference, Diet, Insulin, Gene expression, Metabolism, Body size, *Drosophila*

## INTRODUCTION

In *Drosophila*, dietary nutrients impact larval growth to influence final body size. Nutrient quantity promotes growth during larval development, as nutrient-rich conditions favour larger body sizes (Edgar, 2006; Hietakangas and Cohen, 2009; Nijhout et al., 2014). Nutrient quality also regulates larval growth, as individual macronutrients differ in their body size effects. For example, although dietary protein promotes a larger body size across a wide concentration range (Britton and Edgar, 1998; Britton et al., 2002; Edgar, 2006; Shingleton et al., 2017), moderate or high levels of dietary sugar inhibit growth and reduce body size (Musselman et al., 2011; Pasco and Léopold, 2012; Reis, 2016). This suggests a complex relationship between individual macronutrients and body size.

One factor that influences the magnitude of nutrient-dependent changes to *Drosophila* body size is biological sex (McDonald et al., 2021; Millington et al., 2021a; Shingleton et al., 2017; Stillwell et al., 2010; Teder and Tammaru, 2005). For example, manipulating nutrient quantity by altering dietary protein and carbohydrates causes sex-biased trait size effects (Shingleton et al., 2017). Male and female phenotypic responses to nutrient quality also differ, as the magnitude of protein-dependent changes to body size are larger in females (Millington et al., 2021a). Owing to the widespread use of mixed-sex groups in larval growth studies, however, it remains unclear whether sex-specific body size responses to dietary protein extend to other macronutrients, such as sugar.

Our examination of larval development revealed that lowering dietary sugar augmented the rate of growth and increased body size in both males and females. Indeed, the largest body size in each sex was observed in a diet with no added sugar (0S). Despite an equivalent low-sugar-induced increase in body size, signalling pathway activation, transcriptional responses and metabolic changes were not fully shared between the sexes. In males, our data show that the low-sugar-induced changes to metabolism and body size were triggered by higher insulin/insulin-like growth factor signalling pathway (IIS) activity, where increased IIS was due to improved insulin sensitivity. In females, there was no change in IIS activity or insulin sensitivity in 0S. Instead, females showed transcriptional responses consistent with increased anabolic metabolism, and genetic studies indicated a role for the Target of rapamycin (TOR) pathway in regulating the metabolic and body size effects of the low-sugar diet. Together, our data suggest male and female larvae achieve a larger body size in 0S via distinct mechanisms. This highlights the importance of including both sexes in larval growth studies, as different mechanisms may underlie similar phenotypic responses.

## RESULTS AND DISCUSSION

### A low-sugar diet promotes an increased rate of growth and larger body size

To determine the body size effects of dietary sugar in each sex, we measured pupal volume in *white<sup>1118</sup>* (*w*; FBgn0003996) male and female larvae reared in diets with different quantities of sugar. Because dietary sugar represses growth in a mixed-sex larval group (Musselman et al., 2011; Pasco and Léopold, 2012), we started with a widely-used diet (1S) (Lewis, 1960) and removed sugar in a stepwise manner until none remained (0S). In *w<sup>1118</sup>* females, body size was significantly larger in larvae cultured on a diet with half (0.5S) or one-quarter (0.25S) the amount of sugar found in 1S (Fig. 1A). Interestingly, the largest body size was found in larvae reared in 0S (Fig. 1A). In *w<sup>1118</sup>* males, body size was similarly larger in larvae reared on 0.5S, 0.25S, and 0S compared with larvae raised on 1S (Fig. 1B). Given that the body size effect of a low-sugar diet was equivalent between the sexes (Fig. 1C; Table S1), the

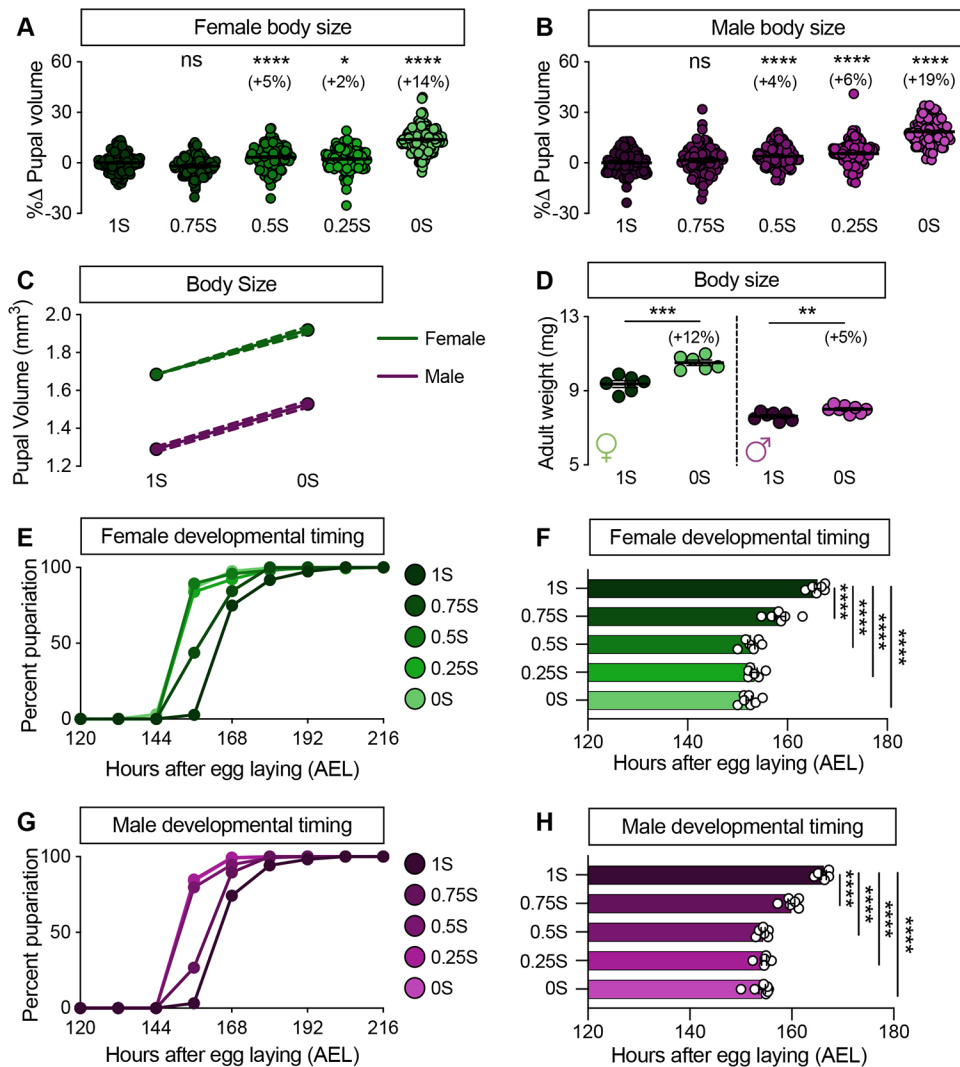
<sup>1</sup>Department of Cellular and Physiological Sciences, Life Sciences Institute, The University of British Columbia, Vancouver V6T 1Z3, Canada. <sup>2</sup>Department of Pathology and Laboratory Medicine, British Columbia Children's Hospital Research Institute, Vancouver V5Z 4H4, Canada.

\*These authors contributed equally to this work

†Author for correspondence (elizabeth.rideout@ubc.ca)

© J.W.M., 0000-0003-4330-2431; L.W.W., 0000-0001-6998-0594; R.I.K., 0000-0003-4610-3059; E.J.R., 0000-0003-0012-2828

Handling Editor: Irene Miguel-Aliaga  
Received 29 December 2021; Accepted 14 February 2022



**Fig. 1. A low-sugar diet promotes an increased rate of growth and larger body size.** (A) Pupal volume in  $w^{1118}$  females cultured on 1S, 0.75S, 0.5S, 0.25S and 0S (one-way ANOVA, Dunnett's multiple comparison test).  $n=100-160$  pupae. (B) Pupal volume in  $w^{1118}$  males cultured on 1S, 0.75S, 0.5S, 0.25S and 0S (one-way ANOVA, Dunnett's multiple comparison test).  $n=100-121$ . (C) Reaction norms for pupal volume in both sexes plotted using 1S and 0S data from A and B (two-way ANOVA). (D) Adult weight in  $w^{1118}$  female and male flies reared on 1S and 0S (unpaired two-tailed Student's  $t$ -test).  $n=6-8$  replicates of ten adult flies each. (E,F) Time to pupariation in  $w^{1118}$  females cultured on 1S, 0.75S, 0.5S, 0.25S and 0S (one-way ANOVA, Tukey HSD test).  $n=6-8$  biological replicates of 50 larvae. (G,H) Time to pupariation in  $w^{1118}$  males cultured on 1S, 0.75S, 0.5S, 0.25S and 0S (one-way ANOVA, Tukey HSD test).  $n=6-8$  biological replicates of 50 larvae. \* $P<0.05$ , \*\* $P<0.01$ , \*\*\* $P<0.001$ , \*\*\*\* $P<0.0001$ . ns, not significant. Error bars indicate s.e.m.; dashed lines indicate 95% confidence interval. To make percent change in pupal volume whole numbers, decimals  $<0.5$  were rounded down, and decimals  $>0.5$  were rounded up.  $P$ -values, sample sizes and statistical tests are in Table S1.

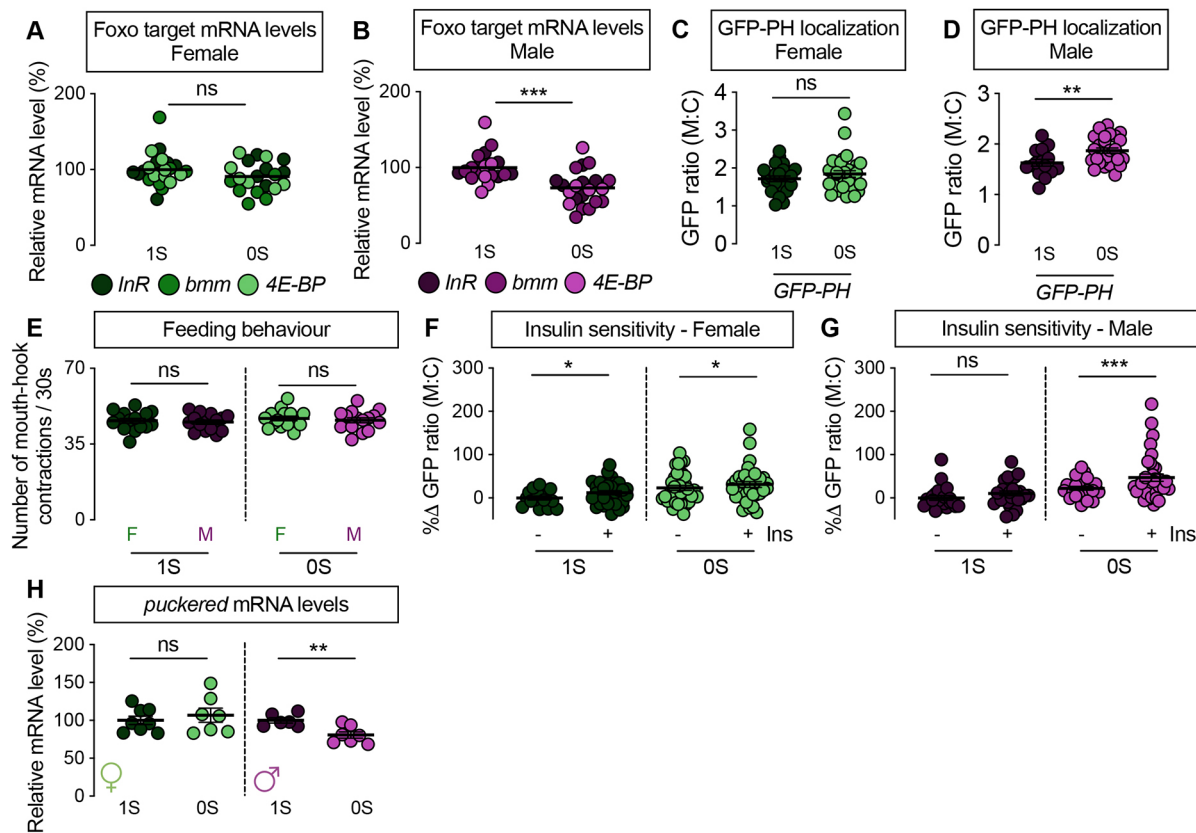
phenotypic responses to dietary sugar were not different between males and females. Although we reproduced this finding using adult weight (Fig. 1D), more studies are needed to understand why the effect of sugar on adult weight was smaller than on pupal volume. More work is also needed to determine whether these growth effects were mediated by dietary sugar alone – as removing cornmeal from 1S to match the caloric content of 0S did not affect body size (Millington et al., 2021a) – or by changing the protein-to-carbohydrate ratio, as both factors affect larval development (Kim et al., 2020; Matzkin et al., 2011; Musselman et al., 2011; Pasco and Léopold, 2012). Nevertheless, we extend previous knowledge by demonstrating an equivalent body size response between the sexes to a low-sugar diet, and by showing a non-sex-specific increase in the larval growth rate (Fig. 1E-H).

#### A low-sugar diet augments IIS activity only in males due to improved insulin sensitivity

IIS has emerged as a key regulator of *Drosophila* nutrient-dependent growth (Gokhale and Shingleton, 2015; Grewal, 2009; Koyama and Mirth, 2018; Lecuit and Le Goff, 2007; Teleman, 2010). Indeed, high levels of IIS activity promote a larger body size (Böhni et al., 1999; Britton et al., 2002; Brogiolo et al., 2001; Chen et al., 1996; Fernandez et al., 1995; Ikeya et al., 2002; Patel et al., 2003; Poltilove et al., 2000). Given the larger body size of males

and females cultured on 0S, we measured diet-induced changes to IIS activity. To quantify IIS activity, we measured mRNA levels of genes co-regulated by transcription factor Forkhead box, sub-group O (Foxo; FBgn0038197), for example *Insulin receptor* (*InR*; FBgn0283499), *brummer* (*bmm*; FBgn0036449), *eukaryotic initiation factor 4E-binding protein* (*4E-BP*; also known as *Thor*; FBgn0261560). The transcriptional activity of Foxo is normally repressed by IIS; thus, high IIS activity inhibits Foxo and reduces mRNA levels of Foxo target genes (Alic et al., 2011; Gershman et al., 2007; Jünger et al., 2003; Puig and Tjian, 2005; Zinke et al., 2002).

In  $w^{1118}$  females, mRNA levels of Foxo target genes were not different between larvae reared in 1S and 0S (Fig. 2A). In contrast, mRNA levels of Foxo targets were significantly lower in  $w^{1118}$  male larvae in 0S (Fig. 2B). Given that we confirmed the accuracy of our larval sorting by detecting the correct male- and female-specific isoforms of sex determination genes (Fig. S1A), these findings suggest that a low-sugar diet enhanced IIS activity in males but not females. To confirm this, we monitored the subcellular localization of green fluorescent protein (GFP) fused to a pleckstrin homology (PH) domain (GFP-PH), which shows increased membrane localization when IIS activity is high (Britton et al., 2002). No diet-dependent change in membrane GFP-PH localization occurred in  $w^{1118}$  females (Fig. 2C); however, male larvae cultured in 0S had



**Fig. 2. A low-sugar diet has sex-specific effects on IIS pathway activity via regulation of insulin sensitivity.** (A) mRNA levels of Foxo target genes (*InR*, *bmm* and *4E-BP*) in female larvae reared on 1S or 0S (unpaired two-tailed Student's *t*-test).  $n=7-8$  biological replicates. (B) mRNA levels of Foxo target genes in male larvae reared on 1S or 0S (unpaired two-tailed Student's *t*-test).  $n=7$  biological replicates. (C) Ratio of cell surface membrane-associated GFP-PH and cytoplasmic GFP-PH [GFP ratio (M:C)] in dissected fat bodies of female larvae. The ratio was not significantly different between 1S and 0S (unpaired two-tailed Student's *t*-test).  $n=23-30$  biological replicates. (D) In males, GFP-PH M:C ratio was significantly higher in males cultured on 0S than 1S (unpaired two-tailed Student's *t*-test).  $n=15-26$ . (E) Mouth-hook contractions in  $w^{1118}$  female and male larvae raised on 1S or 0S (unpaired two-tailed Student's *t*-test).  $n=15$  larvae. (F) In females, GFP-PH M:C ratio was significantly higher in females cultured on 0S and 1S when treated with insulin (two-way ANOVA, Bonferroni's multiple comparisons test).  $n=16-37$ . (G) In males, GFP-PH M:C ratio was significantly higher in males cultured on 0S but not 1S when treated with insulin (unpaired two-way ANOVA, Bonferroni's multiple comparisons test).  $n=22-37$ . (H) mRNA levels of *puc* in female and male larvae raised in 1S or 0S (unpaired two-tailed Student's *t*-test).  $n=6-8$  biological replicates. \* $P<0.05$ , \*\* $P<0.01$ , \*\*\* $P<0.001$ . ns, not significant. Error bars indicate s.e.m. *P*-values, samples sizes and statistical tests are in Table S1.

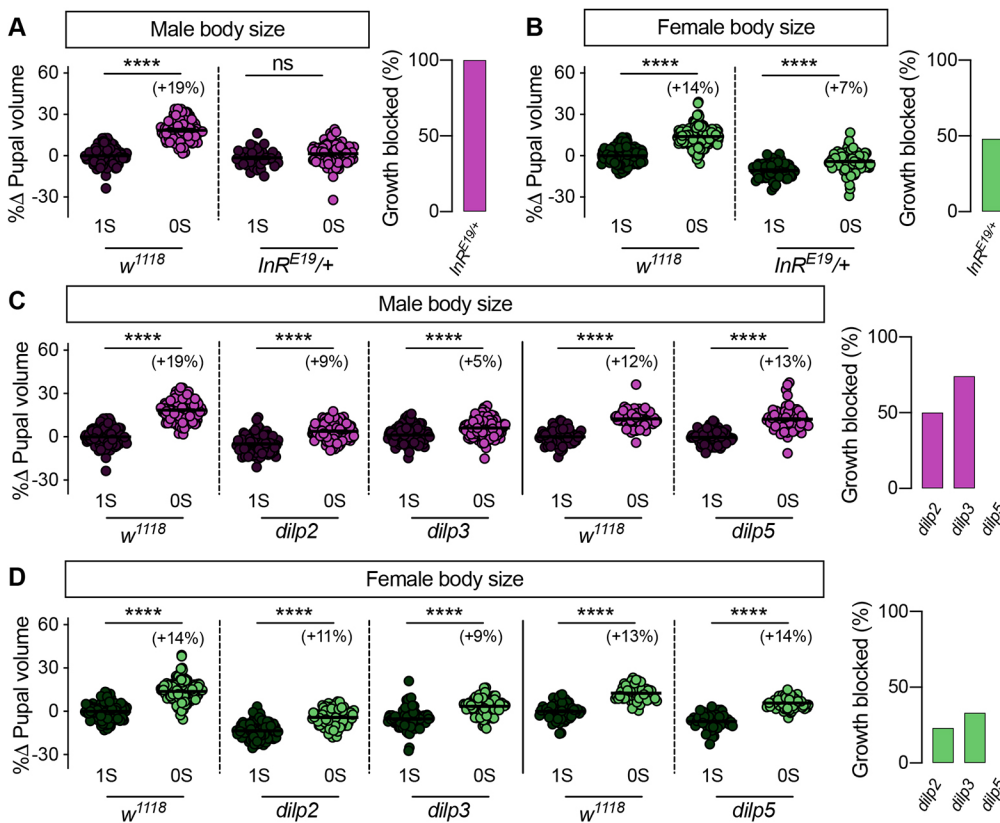
higher membrane GFP-PH than males raised on 1S (Fig. 2D). Because feeding behaviour was not different between the sexes (Fig. 2E), our data support a model in which the low-sugar diet augments IIS activity in male but not female larvae.

One potential reason for higher IIS activity in males reared on 0S is improved insulin sensitivity, as moderate levels of dietary sugar cause insulin resistance in a mixed-sex larval group (Musselman et al., 2011; Lourido et al., 2021; Pasco and Léopold, 2012). To test this, we monitored insulin sensitivity by quantifying GFP-PH membrane localization in larval fat bodies with and without human insulin stimulation (Pasco and Léopold, 2012). Although insulin stimulation significantly enhanced GFP-PH membrane localization in females reared on both diets (Fig. 2F), insulin stimulation only augmented GFP-PH membrane localization in males reared on 0S (Fig. 2G). This suggests that males reared on 0S had higher insulin sensitivity than males reared on 1S, whereas females were insulin sensitive in both contexts. Supporting this, we observed a significant downregulation of *puckered* (*puc*; FBgn0243512), a gene that is lower in insulin-sensitive larvae (Lourido et al., 2021; Pasco and Léopold, 2012), in males but not females reared on 0S (Fig. 2H). Thus, higher IIS activity in male larvae reared in 0S was caused by improved insulin sensitivity, an effect we did not observe in females. This extends our understanding of sex differences in the

nutrient-dependent regulation of IIS (Millington et al., 2021a) and shows that, in flies as in mammals (Guerre-Millo et al., 1985; Mittendorfer, 2005; Macotela et al., 2009; Yki-Järvinen, 1984), females show higher insulin sensitivity than males in some contexts.

#### Male-biased requirement for IIS in promoting the low-sugar-induced increase in body size

Given the known role of IIS in regulating body size, we asked whether the male-specific increase in IIS activity between 1S and 0S was required for the low-sugar-induced increase in body size. To test this, we measured body size in male and female larvae carrying mutations in IIS that support normal growth, but which blunt high levels of IIS activation (*InR*<sup>E19/+</sup>) (Chen et al., 1996; Millington et al., 2021a; Rideout et al., 2015). Although body size was larger in  $w^{1118}$  control males reared on 0S (Fig. 3A), 100% of the low-sugar-induced increase in body size was blocked in *InR*<sup>E19/+</sup> male larvae (Fig. 3A; genotype:diet interaction  $P<0.0001$ ). This suggests the low-sugar induced increase in IIS activity was required in males to achieve a larger body size. In females, only 48% of the low-sugar-induced increase in body size was blocked in *InR*<sup>E19/+</sup> larvae (Fig. 3B). Given that the magnitude of genotype effects on the body size response to diet was larger in males than in females (sex:diet:genotype interaction  $P=0.0114$ ), our data indicates a male-biased



**Fig. 3. Male-biased requirement for IIS and *Drosophila* insulin-like peptides in promoting the low-sugar-induced increase in body size.** (A) Pupal volume in  $w^{1118}$  and  $InR^{E19/+}$  males cultured on 1S or 0S (two-way ANOVA, Tukey HSD test).  $n=36-120$ . (B) Pupal volume in  $w^{1118}$  and  $InR^{E19/+}$  females cultured on 1S or 0S (two-way ANOVA, Tukey HSD test).  $n=73-160$ . (C) Pupal volume in  $w^{1118}$ ,  $dilp2$  mutant,  $dilp3$  mutant and  $dilp5$  mutant males reared on 1S or 0S (two-way ANOVA, Tukey HSD test).  $n=69-120$ . (D) Pupal volume in  $w^{1118}$ ,  $dilp2$  mutant,  $dilp3$  mutant and  $dilp5$  mutant females reared on 1S or 0S (two-way ANOVA, Tukey HSD test).  $n=55-160$ . To calculate sex: diet:genotype interactions three-way ANOVAs were used. \*\*\*\* $P<0.0001$ . ns, not significant. Error bars indicate s.e.m. To make percent change in pupal volume whole numbers, decimals  $<0.5$  were rounded down, and decimals  $>0.5$  were rounded up.  $P$ -values, samples sizes and statistical tests are in Table S1. Note: parallel data collection means that  $w^{1118}$  control data in 0S and 1S are the same in Figs 1A,B and 3A-D.

phenotypic response to reduced IIS function, an effect we replicated across independent experiments despite modest interexperiment variation in the magnitude of the low-sugar-induced increase in body size (Fig. S2A-D).

We further reproduced this male-biased body size effect in larvae lacking the coding sequences for *Drosophila insulin-like peptide 3* ( $dilp3$ ;  $Ilp3$ ; Fbgn0044050) (Fig. 3C,D; sex:diet:genotype interaction  $P=0.0003$ ), *Drosophila insulin-like peptide 2* ( $dilp2$ ;  $Ilp2$ ; Fbgn0036046) (Fig. 3C,D; sex:diet:genotype interaction  $P=0.0627$ ) and in flies lacking the coding sequences for  $dilp2$ ,  $dilp3$  and *Drosophila insulin-like peptide 5* ( $dilp5$ ;  $Ilp5$ ; Fbgn0044038) (genotype  $dilp2-3,5$ ) (Fig. S3A,B; sex:diet:genotype interaction  $P<0.0001$ ); however, loss of  $dilp5$  had no effect on the low-sugar-induced increase in body size in either sex (Fig. 3C,D). Together with the male-specific increase in IIS activity between 1S and 0S, the male-biased body size effect of reduced IIS in a low-sugar context confirms that the signalling and genetic mechanisms that promote larval growth in 0S are not fully shared between the sexes.

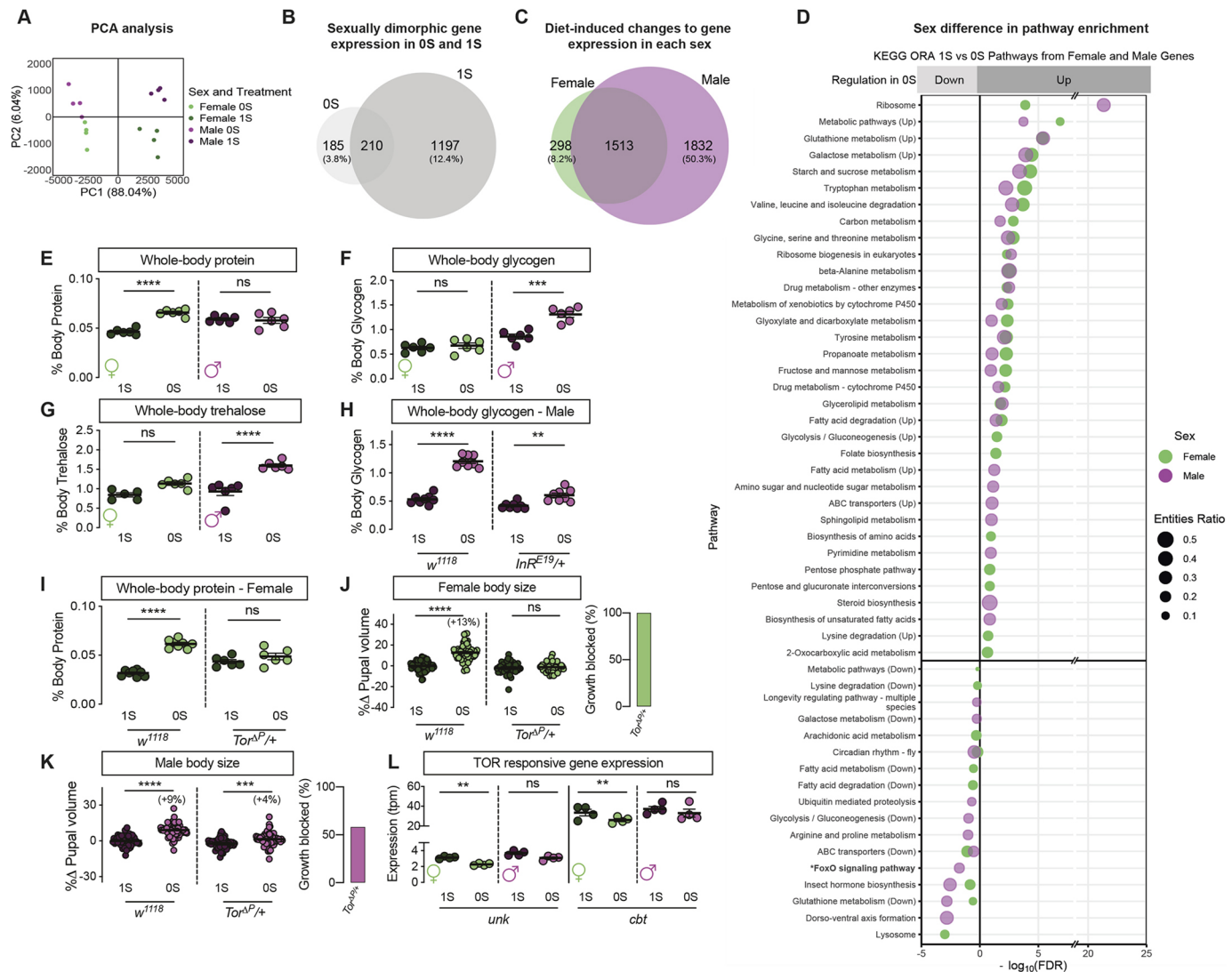
### A low-sugar diet causes differential transcriptional and metabolic responses in males and females

IIS influences body size by triggering profound changes in gene expression (Alic et al., 2011; Bülow et al., 2010; Grewal, 2009; Guertin et al., 2006; Li et al., 2010; Musselman and Kühnlein, 2018; Telean et al., 2008; Tiebe et al., 2015; Webb et al., 2016; Zinke et al., 2002). Because we observed sex-specific regulation of IIS in a low-sugar diet, we performed an unbiased analysis of transcriptional changes in males and females reared on 1S and 0S. We found significant differences in the transcriptional response to a low-sugar diet between the sexes (Fig. 4A), and show that diet affects sexual dimorphism in gene expression (Fig. 4B), consistent with previous

reports (Camus et al., 2019; Jaime et al., 2017). Interestingly, the proportion of genes differentially regulated by a low-sugar diet was higher in males (Table S2): 298 (8.2%) of differentially expressed genes were unique to females and 1832 (50.3%) unique to males (Fig. 4C). A low-sugar diet therefore causes a distinct transcriptional response in each sex (Fig. S4A,B). Indeed, the majority (58%) of enriched Kyoto Encyclopedia of Genes and Genomes (KEGG) pathways were different between males and females ( $P_{adj}<0.05$ ; Fig. 4D). For example, genes in the ‘FoxO signaling pathway’ category were only downregulated in males in 0S (Fig. 4D, bold text). Given that Foxo is repressed when IIS activity is high, this further supports a male-specific IIS increase in 0S.

One overrepresented biological process in both sexes was metabolic regulation: 80.7% of genes differentially expressed in a low-sugar context were linked with metabolism (Fig. 4D). We therefore examined several metabolic parameters in male and female larvae in 1S and 0S to determine the physiological significance of these sex-specific gene expression responses. Although we found non-sex-specific changes to whole-body triglyceride and glucose levels on a low-sugar diet (Fig. S5A,B), we observed sex-specific effects on whole-body protein, glycogen and trehalose levels (Fig. 4E-G). Whole-body protein levels were significantly higher only in  $w^{1118}$  females reared in 0S (Fig. 4E), whereas whole-body glycogen and trehalose were significantly higher only in males reared on 0S (Fig. 4F,G). Importantly, these metabolic changes cannot be attributed to sex differences in the relationship between organ and body size (Fig. S6A).

Instead, the male-specific increase in glycogen was likely due to increased IIS activity in 0S, as the low-sugar-induced increase in glycogen was blunted in  $InR^{E19/+}$  males (Fig. 4H), aligning with the known role of IIS in regulating carbohydrate metabolism (Mattila and Hietakangas, 2017). Thus in males, the low-sugar diet



**Fig. 4. A low-sugar diet has sex-biased effects on metabolic gene expression and metabolism.** (A) PCA plot for male and female larvae reared on 1S or 0S diets separated by sex and diet. (B) Venn diagram of sexually dimorphic gene expression in larvae reared on 0S or 1S. (C) Venn diagram of diet-induced changes to gene expression in each sex. (D) KEGG enrichment analysis shows pathways differentially regulated between 0S and 1S in males and females. (E) Whole-body protein levels in *w<sup>1118</sup>* female and male larvae raised on 1S or 0S (unpaired two-tailed Student's *t*-test). *n*=6 biological replicates. (F) Whole-body glycogen levels in *w<sup>1118</sup>* female and male larvae reared on 1S or 0S (unpaired two-tailed Student's *t*-test). *n*=6 biological replicates. (G) Whole-body trehalose levels in *w<sup>1118</sup>* female and male larvae cultured on 1S or 0S (unpaired two-tailed Student's *t*-test). *n*=5-6 biological replicates. (H) Whole-body glycogen levels in *w<sup>1118</sup>* and *InR<sup>E19/+</sup>* male larvae reared on 1S or 0S (two-way ANOVA, Tukey HSD test). *n*=8 biological replicates. (I) Whole-body protein levels in *w<sup>1118</sup>* and *Tor<sup>ΔP/+</sup>* female larvae reared on 1S or 0S (two-way ANOVA, Tukey HSD test). *n*=6-8 biological replicates. (J) Pupal volume in *w<sup>1118</sup>* and *Tor<sup>ΔP/+</sup>* females cultured on 1S or 0S (two-way ANOVA, Tukey HSD test). *n*=58-98. (K) Pupal volume in *w<sup>1118</sup>* and *Tor<sup>ΔP/+</sup>* males cultured on 1S or 0S (two-way ANOVA, Tukey HSD test). *n*=58-69. (L) Expression of *unk* and *cbt* in females and males raised in 1S and 0S from RNA-seq data (adjusted *P*-values calculated in DESeq2). \*\**P*<0.01, \*\*\**P*<0.001, \*\*\*\**P*<0.0001. ns, not significant. Error bars indicate s.e.m. To make percentage change pupal volume whole numbers, decimals <0.5 were rounded down, and decimals >0.5 were rounded up. *P*-values, samples sizes and statistical tests are in Table S1.

augments IIS activity due to improved insulin sensitivity, leading to higher whole-body glycogen levels and a larger body size. In females, these mechanisms are not fully shared: the low-sugar diet caused no change in insulin sensitivity, and reduced IIS function did not block the female-specific increase in body size or whole-body protein levels (Fig. S7A).

To gain deeper insight into the phenotypic effects of a low-sugar diet in females, we focused on female-specific metabolic and transcriptional changes. The main metabolic phenotype was increased whole-body protein (Fig. 4E), and female-specific transcriptional changes included higher mRNA levels of genes related to glycolysis and gluconeogenesis, folate biosynthesis,

biosynthesis of amino acids and the pentose phosphate pathway, and lower mRNA levels of genes linked with lysosomes, arachidonic acid metabolism and fatty acid degradation (down). Together, these changes indicate a general upregulation of anabolic processes in 0S. This anabolic regulation is unlikely to depend on *Mondo* (FBgn0032940) and *bigmax* (FBgn0039509), two key regulators of sugar sensing and tolerance (Mattila et al., 2015; Havula and Hietakangas, 2012; Havula et al., 2013; Havula and Hietakangas, 2018), as we observed non-sex-specific changes to known *Mondo*-*bigmax* target genes (Fig. S8A-D; Table S2). Another key regulator of anabolic metabolism is the TOR pathway (Wullschleger et al., 2006). In multiple organisms, TOR promotes mRNA translation

and protein synthesis, the pentose phosphate pathway and glycolytic flux (Dunlop and Tee, 2009; LaPlante and Sabatini, 2013; Wullschlegler et al., 2006), and represses catabolic processes such as autophagy and lysosomal biogenesis (Puertollano, 2014).

Given that the female-specific metabolic and transcriptional changes in OS are consistent with a potential role for TOR, we asked whether TOR function was required in females for the metabolic and body size responses to a low-sugar diet. In female larvae with reduced TOR function (*Target of rapamycin, Tor*; FBgn0021796; genotype *Tor<sup>ΔP/+</sup>*), the low-sugar-induced increase in whole-body protein was blocked (Fig. 4I). This provides genetic evidence that TOR plays a role in regulating the diet-dependent increase in protein levels, aligning with the well-known effect of TOR on protein synthesis (Wullschlegler et al., 2006). Because TOR controls growth in part due to regulation of protein synthesis (Killip and Grewal, 2012; Marshall et al., 2012; Rideout et al., 2012; Ghosh et al., 2014; Terada et al., 1995; Barbet et al., 1996; Zhang et al., 2000), we monitored the low-sugar-induced increase in body size in larvae with reduced TOR function. In *w<sup>1118</sup>* females, larvae reared on OS were significantly larger than genotype-matched larvae raised on 1S (Fig. 4J); however, 100% of the low-sugar-induced increase in body size was blocked in *Tor<sup>ΔP/+</sup>* female larvae (Fig. 4J; genotype:diet interaction  $P < 0.0001$ ). This suggests that TOR function in females contributes to their larger body size in OS. In males, although the low-sugar-induced increase in body size was 50% blocked in *Tor<sup>ΔP/+</sup>* larvae (Fig. 4K; genotype:diet  $P < 0.0001$ ), the magnitude of genotype effects on the diet-induced increase in body size was greater in females than in males (sex:diet:genotype interaction  $P = 0.0303$ ). This female-biased effect was robust, as we reproduced the sex:diet:genotype interaction in *Tor<sup>ΔP/+</sup>* larvae across multiple biological replicates (Fig. S9A-D). These data provide genetic evidence that TOR plays a female-biased role in regulating the metabolic and body size responses to a low-sugar diet.

Based on these metabolic and body size effects, we next examined TOR regulation in males and females in 1S and OS. Our RNA-seq data showed that mRNA levels of two TOR-responsive genes, *unkempt (unk)* (FBgn0004395) and *cabut (cbt)* (FBgn0043364) (Guertin et al., 2006; Ingaramo et al., 2020; Tiebe et al., 2015), were differentially regulated in a low-sugar diet in females but not in males (Fig. 4L). The low-sugar diet-induced decrease in both *unk* and *cbt* mRNA is consistent with increased TOR activity (Guertin et al., 2006; Ingaramo et al., 2020; Tiebe et al., 2015), suggesting that a low-sugar diet augments TOR in females but not males. When we examined levels of phosphorylated Ribosomal protein S6 kinase (S6k; FBgn0283472) (p-S6k), a downstream target of TOR related to ribosomal biogenesis (Miron et al., 2003; Radimerski et al., 2002; Rintelen et al., 2001; Wullschlegler et al., 2006; Zhang et al., 2000), we found a trend toward increased p-S6k levels in both sexes ( $P = 0.0625$ ) potentially related to an increase in total S6k levels, as the trend was abolished when we monitored the ratio of p-S6k/t-S6k (Fig. S10A-C). Although this S6k regulation did not align with the sex-biased regulation of TOR transcriptional targets or our genetic data supporting a female-biased role for TOR in a low-sugar context, TOR has many downstream targets that mediate its effects on diverse cellular processes. Thus, future studies will need to investigate TOR targets beyond S6k for sex-biased regulation, and test whether additional targets mediate the female-biased changes to metabolism and body size in a low-sugar context. This highlights the importance of studying IIS and TOR biology in both sexes to gain a deeper understanding of how these key nutrient-sensing pathways couple metabolic regulation with diet.

Overall, our findings support a clear role for the upregulation of IIS as a key mechanism underlying the metabolic and body size responses in male larvae reared on a low-sugar diet. In females, TOR had female-biased effects on the low-sugar-induced changes to metabolism and body size. Together with the differential transcriptional responses in OS between males and females, these data suggest that the mechanisms underlying the low-sugar-induced increase in body size are not fully shared between the sexes. This highlights the importance of including both males and females in larval growth studies, as not all mechanisms will be shared between the sexes even in contexts where the phenotypic response is equivalent.

## MATERIALS AND METHODS

### Fly husbandry

Our 1S diet consists of 20.5 g/l sucrose, 70.9 g/l D-glucose, 48.5 g/l cornmeal, 45.3 g/l yeast, 4.55 g/l agar, 0.5 g CaCl<sub>2</sub>·2H<sub>2</sub>O, 0.5 g MgSO<sub>4</sub>·7H<sub>2</sub>O, 11.77 ml acid mix (propionic acid/phosphoric acid). Our OS diet consists of 48.5 g/l cornmeal, 45.3 g/l yeast, 4.55 g/l agar, 0.5 g CaCl<sub>2</sub>·2H<sub>2</sub>O, 0.5 g MgSO<sub>4</sub>·7H<sub>2</sub>O, 11.77 ml acid mix. Details of 0.75S, 0.5S and 0.25S diets can be found in Table S4. Larvae were raised at a density of 50 animals per 10 ml food at 25°C, and sexed by gonad size as mid third instar larvae at the time of collection for gene expression or metabolic experiments [108 h after egg-laying (AEL)]. For pupal volume experiments, animals were separated by sex between 0–12 h after puparium formation. Adult flies were maintained at a density of 20 flies per vial in single-sex groups. For all metabolic, gene expression, imaging, insulin stimulation and western blotting experiments, larvae were collected at 108 h AEL.

### Fly strains

The following fly strains from the Bloomington *Drosophila* Stock Center were used: *w<sup>1118</sup>* (#3605), *InR<sup>EE19</sup>* (#9646), *Tor<sup>ΔP</sup>* (#7014). Additional fly strains include: *dilp2*, *dilp3*, *dilp5* and *dilp2-3,5* (Grönke et al., 2010). All fly strains were backcrossed for at least six generations, in addition to extensive prior backcrossing (Grönke et al., 2010; Millington et al., 2021a,b).

### Body size

Pupal volume and adult weight were measured as previously described (Delanoue et al., 2010; Millington et al., 2021a,b; Rideout et al., 2015). For pupal volume, one biological replicate consists of one pupa; for adult weight, one biological replicate consists of one tube of ten flies.

### Feeding behaviour

Feeding behaviour was quantified as number of mouth-hook contractions per 30 s. One biological replicate represents one larva.

### Developmental timing

Time to pupariation was measured as previously described (Millington et al., 2021a). Time to 50% pupariation was calculated per replicate and used for quantification and statistical analysis. One biological replicate consists of 50 animals in one vial, with pupae sexed at 12 h intervals to determine pupariation in both sexes.

### Metabolism assays

One biological replicate consists of ten female or male larvae. Larvae were frozen on dry ice and homogenized in appropriate buffers to measure whole-body lipid, protein, glucose, glycogen and trehalose levels. All assays were performed as described in Tennessen et al. (2014) and Wat et al. (2020) and according to manufacturer's instructions.

### RNA extraction and cDNA synthesis

RNA extraction and cDNA synthesis were performed as previously described (Marshall et al., 2012; Rideout et al., 2012, 2015; Wat et al., 2020). Briefly, each biological replicate consists of ten *w<sup>1118</sup>* larvae frozen on dry ice and stored at –80°C. Each experiment contained 3–4 biological replicates per sex, and each experiment was performed at least twice. RNA was extracted using 500 μl Trizol (Thermo Fisher Scientific, 15596018) and

precipitated using isopropanol and 75% ethanol. Pelleted RNA was resuspended in 200 µl molecular biology grade water (Corning, 46-000-CV) and stored at  $-80^{\circ}\text{C}$  until use. For cDNA synthesis, an equal volume of RNA per reaction was DNase-treated and reverse transcribed using the QuantiTect Reverse Transcription Kit (Qiagen, 205314).

### Quantitative real-time PCR (qPCR)

qPCR was performed as previously described (Marshall et al., 2012; Rideout et al., 2012, 2015; Wat et al., 2020). Each biological replicate consists of ten larvae. Values displayed in each graph represent the fold change for the mRNA of a gene, normalized to *Act5c* and  $\beta$ -*tub*, housekeeping genes that were not differentially regulated between the sexes or between 1S and 0S. A complete primer list is included in Table S5.

### Preparation of protein samples, SDS-PAGE and western blotting

Samples were generated as previously described (Millington et al., 2021a). We loaded 20 µg of protein per lane, separated on a 12% SDS-PAGE gel in SDS running buffer, and transferred onto a nitrocellulose membrane (Bio-Rad) for 2 h at 40 V on ice. Membranes were incubated for 24 h in blocking buffer at  $4^{\circ}\text{C}$  [5% milk or 5% bovine serum albumin in Tris buffered saline, 0.1% Tween 20 (TBST)] and subsequently incubated with primary antibodies overnight at  $4^{\circ}\text{C}$ . Anti-pS6k (#9209, Cell Signaling Technology), anti-tS6k (gift from A. Teleman, German Cancer Research Center and Heidelberg University, Germany) and anti-Actin (#8432, Santa Cruz Biotechnology) were used at 1:1000. After  $3 \times 2$  min washes in 0.1% TBST, HRP-conjugated secondary antibodies were used at 1:5000 for pS6k (#65-6120, Invitrogen) and 1:3000 for actin (#7076, Cell Signaling Technology). Membranes were washed ( $3 \times 2$  min,  $2 \times 15$  min) in 0.1% TBST, washed  $1 \times 5$  min in TBS, and finally Pierce ECL was applied according to the manufacturer's instructions (#32134, Thermo Fisher Scientific). To measure the concentration of all proteins loaded in a sample, we used the stain-free labelling system from Bio-Rad (#1610185) according to manufacturer's instructions.

### GFP-PH localization and insulin sensitivity

To measure IIS activity in the fat body, late third instar larvae were collected at 108 h AEL and washed in PBS. Twelve to fifteen larvae were collected for each batch and inverted in PBS; inverted carcasses were fixed in 4% paraformaldehyde in PBS on a rocking platform at room temperature for 40 min, then washed twice in PBS. Fixed fat bodies were mounted in SlowFade Diamond mounting media (S36972, Thermo Fisher Scientific) before imaging. To measure insulin sensitivity, late third instar larvae were collected at 108 h AEL and washed in PBS once. The larvae were then moved into a dish with ice-cold Schneider's *Drosophila* Media (21720024, Thermo Fisher Scientific) and inverted. Inverted carcasses (with fat body) were immediately moved to a separate dish with fresh Schneider's. Once all dissections were complete, Schneider's Media was replaced with 2 ml of fresh Schneider's *Drosophila* Media containing a final concentration of 0.5 µM recombinant human insulin (I2643, Sigma-Aldrich) and incubated at room temperature for 20 min. Carcasses were then washed once with PBS and fixed with 4% paraformaldehyde for 40 min, washed twice with PBS, and mounted in SlowFade Diamond mounting media (S36972, Thermo Fisher Scientific). Images were acquired on a Leica SP8 confocal microscope with  $20 \times$  objective and quantified using Fiji (Schindelin et al., 2012). For each cell, the average GFP intensity of a short stretch of cell membrane and a small stretch of adjacent were quantified, and the ratio of membrane to cytosolic GFP was calculated.

### RNA-seq and analysis

RNA from  $w^{1118}$  males and females reared on either the 1S or 0S diet was sequenced to determine gene expression. Quality control of samples was performed using the Agilent 2100 Bioanalyzer to confirm sample quality. Sequencing was performed using a NextSeq 500 sequencer. Sequence quality was assessed using FastQC on Illumina BaseSpace. Reads were aligned to *Drosophila melanogaster* genome (UCSC dm3) using STAR aligner with default settings. All raw sequencing data have been deposited and are publicly available through the NCBI Gene Expression Omnibus

database (accession number GSE198435). For differential expression analysis, fragments per kilobase of transcript per million mapped reads were calculated using the DESeq2 normalization method. Log fold changes and significance for differential expression were determined and a significance threshold of 0.05 was selected for adjusted *P*-values determined with Bonferroni correction. Differentially expressed genes are presented in Table S2.

### Statistical analysis

GraphPad Prism (GraphPad Prism version 8.4.3 for Mac OS X) was used for all statistical tests and for figure preparation. For normally distributed data with comparisons between two experimental groups, an unpaired two-tailed Student's *t*-test was used to determine significance. For normally distributed data with comparisons between more than two experimental groups, one-way ANOVAs were used to determine significance. In order to determine significant interactions between sex, diet and genotype, multivariate ANOVAs (two-way and three-way ANOVAs) were used on normally distributed data. For non-normally distributed data, we used Wilcoxon signed rank tests for comparisons between two groups. A complete list of *P*-values and full details of statistical tests is provided in Table S1. Raw values for all data collected and displayed in this paper are available in Table S3.

### Acknowledgements

We thank Dr Linda Partridge for sharing the *dilp2*, *dilp3*, *dilp5* and *dilp2-3,5* mutant strains. We thank the Bloomington *Drosophila* Stock Center (NIH P40OD018537) for stocks used in this study. We thank Aurelio Teleman for the kind gift of the total S6k antibody. We acknowledge critical resources and information provided by FlyBase (Thurmond et al., 2018); FlyBase is supported by a grant from the National Human Genome Research Institute at the US National Institutes of Health (U41 HG000739) and by the British Medical Research Council (MR/N030117/1). We acknowledge that our research takes place on the traditional, ancestral and unceded territory of the Musqueam people; a privilege for which we are deeply grateful.

### Competing interests

The authors declare no competing or financial interests.

### Author contributions

Conceptualization: J.W.M., E.J.R.; Methodology: J.W.M., E.J.R.; Formal analysis: J.W.M., Y.H.X.; Investigation: J.W.M., P.B., C.C., Y.H.X., L.W.W., G.P.B., Z.S., P.J.B.-C.; Resources: E.J.R.; Data curation: J.W.M.; Writing - original draft: J.W.M., E.J.R.; Writing - review & editing: J.W.M., R.I.K.G., E.J.R.; Visualization: J.W.M.; Supervision: E.J.R.; Project administration: E.J.R.; Funding acquisition: E.J.R.

### Funding

Funding for this study was provided by grants to E.J.R. from the Canadian Institutes of Health Research (CIHR; PJT-153072), CIHR Sex and Gender Science Chair Program (GS4-171365), Natural Sciences and Engineering Research Council of Canada (NSERC; RGPIN-2016-04249), Michael Smith Foundation for Health Research (16876), and the Canada Foundation for Innovation (JELF-34879). J.W.M. and P.B. were supported by a Four Year CELL Fellowship from the University of British Columbia (UBC); L.W.W. was supported by a British Columbia Graduate Scholarship Award and a One Year CELL Fellowship from UBC; Z.S. was supported by an NSERC Undergraduate Student Research Award.

### Data availability

All raw sequencing data have been deposited in GEO under accession number GSE198435.

### Peer review history

The peer review history is available online at <https://journals.biologists.com/dev/article-lookup/doi/10.1242/dev.200491>.

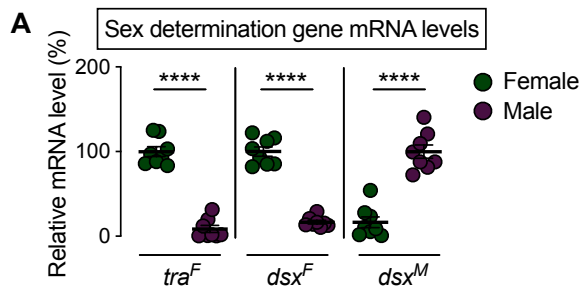
### References

- Alic, N., Andrews, T. D., Giannakou, M. E., Papatheodorou, I., Slack, C., Hoddinott, M. P., Cochemé, H. M., Schuster, E. F., Thornton, J. M. and Partridge, L. (2011). Genome-wide dFOXO targets and topology of the transcriptomic response to stress and insulin signalling. *Mol. Syst. Biol.* **7**, 502. doi:10.1038/msb.2011.36
- Barbet, N. C., Schneider, U., Helliwell, S. B., Stansfield, I., Tuite, M. F. and Hall, M. N. (1996). TOR controls translation initiation and early G1 progression in yeast. *Mol. Biol. Cell* **7**, 25-42. doi:10.1091/mbc.7.1.25

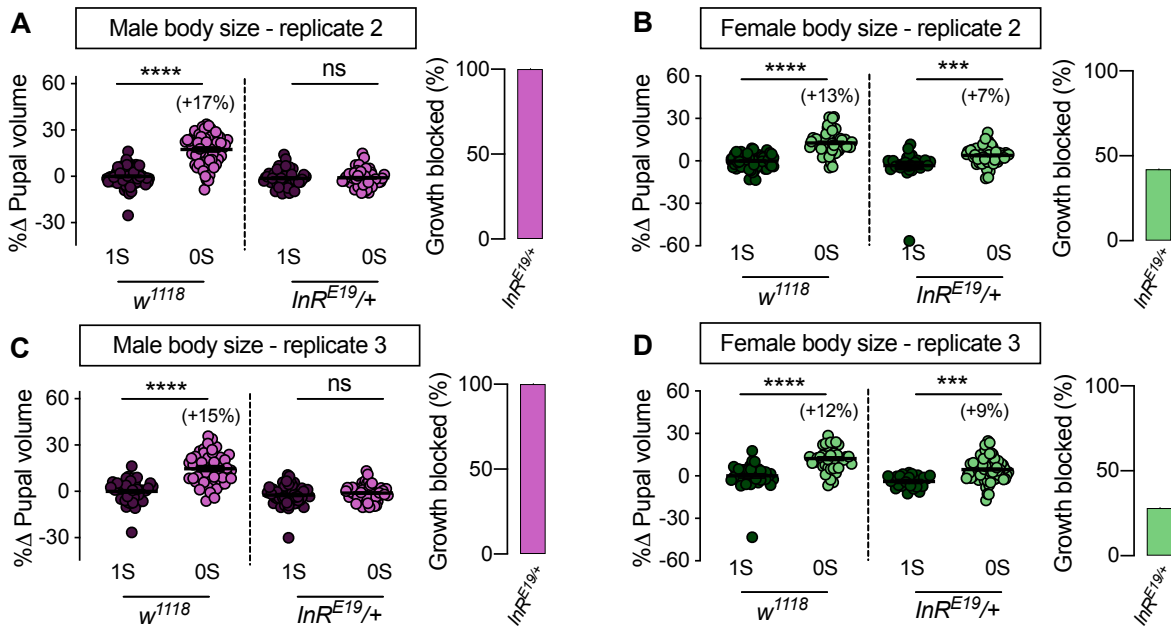
- Böhni, R., Riesgo-Escovar, J., Oldham, S., Brogiolo, W., Stocker, H., Andrus, B. F., Beckingham, K. and Hafen, E. (1999). Autonomous control of cell and organ size by CHICO, a *Drosophila* homolog of vertebrate IRS1-4. *Cell* **97**, 865-875. doi:10.1016/S0092-8674(00)80799-0
- Britton, J. S. and Edgar, B. A. (1998). Environmental control of the cell cycle in *Drosophila*: nutrition activates mitotic and endoreplicative cells by distinct mechanisms. *Development* **125**, 2149-2158. doi:10.1242/dev.125.11.2149
- Britton, J. S., Lockwood, W. K., Li, L., Cohen, S. M. and Edgar, B. A. (2002). *Drosophila*'s insulin/PI3-kinase pathway coordinates cellular metabolism with nutritional conditions. *Dev. Cell* **2**, 239-249. doi:10.1016/S1534-5807(02)00117-X
- Brogiolo, W., Stocker, H., Ikeya, T., Rintelen, F., Fernandez, R. and Hafen, E. (2001). An evolutionarily conserved function of the *Drosophila* insulin receptor and insulin-like peptides in growth control. *Curr. Biol.* **11**, 213-221. doi:10.1016/S0960-9822(01)00068-9
- Bülow, M. H., Aebersold, R., Pankratz, M. J. and Jünger, M. A. (2010). The *Drosophila* FoxA ortholog Fork head regulates growth and gene expression downstream of Target of rapamycin. *PLoS ONE* **5**, e15171. doi:10.1371/journal.pone.0015171
- Camus, M. F., Piper, M. D. W. and Reuter, M. (2019). Sex-specific transcriptomic responses to changes in the nutritional environment. *eLife* **8**, e47262. doi:10.7554/eLife.47262
- Chen, C., Jack, J. and Garofalo, R. S. (1996). The *Drosophila* insulin receptor is required for normal growth. *Endocrinology* **137**, 846-856. doi:10.1210/endo.137.3.8603594
- Delanoue, R., Slaidina, M. and Léopold, P. (2010). The steroid hormone ecdysone controls systemic growth by repressing dMyc function in *Drosophila* fat cells. *Dev. Cell* **18**, 1012-1021. doi:10.1016/j.devcel.2010.05.007
- Dunlop, E. A. and Tee, A. R. (2009). Mammalian target of rapamycin complex 1: signalling inputs, substrates and feedback mechanisms. *Cell. Signal.* **21**, 827-835. doi:10.1016/j.cellsig.2009.01.012
- Edgar, B. A. (2006). How flies get their size: genetics meets physiology. *Nat. Rev. Genet.* **7**, 907-916. doi:10.1038/nrg1989
- Fernandez, R., Tabarini, D., Azpiazu, N., Frasnich, M. and Schlessinger, J. (1995). The *Drosophila* insulin receptor homolog: a gene essential for embryonic development encodes two receptor isoforms with different signaling potential. *EMBO J.* **14**, 3373-3384. doi:10.1002/j.1460-2075.1995.tb07343.x
- Gershman, B., Puig, O., Hang, L., Peitzsch, R. M., Tatar, M. and Garofalo, R. S. (2007). High-resolution dynamics of the transcriptional response to nutrition in *Drosophila*: a key role for dFOXO. *Physiol. Genomics* **29**, 24-34. doi:10.1152/physiolgenomics.00061.2006
- Ghosh, A., Rideout, E. J. and Grewal, S. S. (2014). TIF-1A-dependent regulation of ribosome synthesis in *Drosophila* muscle is required to maintain systemic insulin signaling and larval growth. *PLoS Genet.* **10**, e1004750. doi:10.1371/journal.pgen.1004750
- Gokhale, R. H. and Shingleton, A. W. (2015). Size control: the developmental physiology of body and organ size regulation. *Wiley Interdiscipl. Rev. Dev. Biol.* **4**, 335-356. doi:10.1002/wdev.181
- Grewal, S. S. (2009). Insulin/TOR signaling in growth and homeostasis: a view from the fly world. *Int. J. Biochem. Cell Biol.* **41**, 1006-1010. doi:10.1016/j.biocel.2008.10.010
- Grönke, S., Clarke, D.-F., Broughton, S., Andrews, T. D. and Partridge, L. (2010). Molecular evolution and functional characterization of *Drosophila* insulin-like peptides. *PLoS Genet.* **6**, e1000857. doi:10.1371/journal.pgen.1000857
- Guerre-Millo, M., Leturque, A., Girard, J. and Lavau, M. (1985). Increased insulin sensitivity and responsiveness of glucose metabolism in adipocytes from female versus male rats. *J. Clin. Invest.* **76**, 109-116. doi:10.1172/JCI111932
- Guertin, D. A., Guntur, K. V. P., Bell, G. W., Thoreen, C. C. and Sabatini, D. M. (2006). Functional genomics identifies TOR-regulated genes that control growth and division. *Curr. Biol.* **16**, 958-970. doi:10.1016/j.cub.2006.03.084
- Havula, E. and Hietakangas, V. (2012). Glucose sensing by ChREBP/MondoA-Mix transcription factors. *Semin. Cell Dev. Biol.* **23**, 640-647. doi:10.1016/j.semcdb.2012.02.007
- Havula, E. and Hietakangas, V. (2018). Sugar sensing by ChREBP/Mondo-Mix-new insight into downstream regulatory networks and integration of nutrient-derived signals. *Curr. Opin. Cell Biol.* **51**, 89-96. doi:10.1016/j.cob.2017.12.007
- Havula, E., Teesalu, M., Hyötyläinen, T., Seppälä, H., Hasygar, K., Auvinen, P., Orešič, M., Sandmann, T. and Hietakangas, V. (2013). Mondo/ChREBP-Mix-regulated transcriptional network is essential for dietary sugar tolerance in *Drosophila*. *PLoS Genet.* **9**, e1003438. doi:10.1371/journal.pgen.1003438
- Hietakangas, V. and Cohen, S. M. (2009). Regulation of tissue growth through nutrient sensing. *Annu. Rev. Genet.* **43**, 389-410. doi:10.1146/annurev-genet-102108-134815
- Ikeya, T., Galic, M., Belawat, P., Nairz, K. and Hafen, E. (2002). Nutrient-dependent expression of insulin-like peptides from neuroendocrine cells in the CNS contributes to growth regulation in *Drosophila*. *Curr. Biol.* **12**, 1293-1300. doi:10.1016/S0960-9822(02)01043-6
- Ingaramo, M. C., Sánchez, J. A., Perrimon, N. and Dekanty, A. (2020). Fat body p53 regulates systemic insulin signaling and autophagy under nutrient stress via *Drosophila* Upd2 repression. *Cell Rep.* **33**, 108321. doi:10.1016/j.celrep.2020.108321
- Jaime, M. D. L. A., Hurtado, J., Loustalot-Laclette, M. R., Oliver, B. and Markow, T. (2017). Exploring effects of sex and diet on *Drosophila melanogaster* head gene expression. *J. Genomics* **5**, 128-131. doi:10.7150/jgen.22393
- Jünger, M. A., Rintelen, F., Stocker, H., Wasserman, J. D., Végh, M., Radimerski, T., Greenberg, M. E. and Hafen, E. (2003). The *Drosophila* forkhead transcription factor FOXO mediates the reduction in cell number associated with reduced insulin signaling. *J. Biol.* **2**, 20. doi:10.1186/1475-4924-2-20
- Killip, L. E. and Grewal, S. S. (2012). DREF is required for cell and organismal growth in *Drosophila* and functions downstream of the nutrition/TOR pathway. *Dev. Biol.* **371**, 191-202. doi:10.1016/j.ydbio.2012.08.020
- Kim, K., Jang, T., Min, K.-J. and Lee, K. P. (2020). Effects of dietary protein: carbohydrate balance on life-history traits in six laboratory strains of *Drosophila melanogaster*. *Entomol. Exp. Appl.* **168**, 482-491. doi:10.1111/eea.12855
- Koyama, T. and Mirth, C. K. (2018). Unravelling the diversity of mechanisms through which nutrition regulates body size in insects. *Curr. Opin. Insect. Sci.* **25**, 1-8. doi:10.1016/j.cois.2017.11.002
- Laplante, M. and Sabatini, D. M. (2013). Regulation of mTORC1 and its impact on gene expression at a glance. *J. Cell Sci.* **126**, 1713-1719. doi:10.1242/jcs.125773
- Lecuit, T. and Le Goff, L. (2007). Orchestrating size and shape during morphogenesis. *Nature* **450**, 189-192. doi:10.1038/nature06304
- Lewis, E. B. (1960). A new standard food medium. *Drosophila Information Service* **34**, 117-118.
- Li, L., Edgar, B. A. and Grewal, S. S. (2010). Nutritional control of gene expression in *Drosophila* larvae via TOR, Myc and a novel cis-regulatory element. *BMC Cell Biol.* **11**, 7. doi:10.1186/1471-2121-11-7
- Lourido, F., Quenti, D., Salgado-Canales, D. and Tobar, N. (2021). Domeless receptor loss in fat body tissue reverts insulin resistance induced by a high-sugar diet in *Drosophila melanogaster*. *Sci. Rep.* **11**, 3263. doi:10.1038/s41598-021-82944-4
- Macotela, Y., Boucher, J., Tran, T. T. and Kahn, C. R. (2009). Sex and depot differences in adipocyte insulin sensitivity and glucose metabolism. *Diabetes* **58**, 803-812. doi:10.2337/db08-1054
- Marshall, L., Rideout, E. J. and Grewal, S. S. (2012). Nutrient/TOR-dependent regulation of RNA polymerase III controls tissue and organismal growth in *Drosophila*. *EMBO J.* **31**, 1916-1930. doi:10.1038/emboj.2012.33
- Mattila, J. and Hietakangas, V. (2017). Regulation of carbohydrate energy metabolism in *Drosophila melanogaster*. *Genetics* **207**, 1231-1253.
- Mattila, J., Havula, E., Suominen, E., Teesalu, M., Surakka, I., Hynynen, R., Kilpinen, H., Väänänen, J., Hovatta, I., Käkälä, R. et al. (2015). Mondo-Mix mediates organismal sugar sensing through the Gli-similar transcription factor sugarbabe. *Cell Rep.* **13**, 350-364. doi:10.1016/j.celrep.2015.08.081
- Matzkin, L. M., Johnson, S., Paight, C., Bozinovic, G. and Markow, T. A. (2011). Dietary protein and sugar differentially affect development and metabolic pools in ecologically diverse *Drosophila*. *J. Nutr.* **141**, 1127-1133. doi:10.3945/jn.111.138438
- McDonald, J. M. C., Nabili, P., Thorsen, L., Jeon, S. and Shingleton, A. W. (2021). Sex-specific plasticity and the nutritional geometry of insulin-signaling gene expression in *Drosophila melanogaster*. *EvoDevo* **12**, 6. doi:10.1186/s13227-021-00175-0
- Millington, J. W., Brownrigg, G. P., Chao, C., Sun, Z., Basner-Collins, P. J., Wat, L. W., Hudry, B., Miguel-Aliaga, I. and Rideout, E. J. (2021a). Female-biased upregulation of insulin pathway activity mediates the sex difference in *Drosophila* body size plasticity. *eLife* **10**, e58341. doi:10.7554/eLife.58341
- Millington, J. W., Brownrigg, G. P., Basner-Collins, P. J., Sun, Z. and Rideout, E. J. (2021b). Genetic manipulation of insulin/insulin-like growth factor signaling pathway activity has sex-biased effects on *Drosophila* body size. *G3 Genes|Genomes|Genetics* **11**, jkaa067. doi:10.1093/g3journal/jkaa067
- Miron, M., Lasko, P. and Sonenberg, N. (2003). Signaling from Akt to FRAP/TOR targets both 4E-BP and S6K in *Drosophila melanogaster*. *Mol. Cell. Biol.* **23**, 9117-9126. doi:10.1128/mcb.23.24.9117-9126.2003
- Mittendorfer, B. (2005). Insulin resistance: sex matters. *Curr. Opin. Clin. Nutr. Metab. Care* **8**, 367-372. doi:10.1097/01.mco.0000172574.64019.98
- Musselman, L. P. and Kühnlein, R. P. (2018). *Drosophila* as a model to study obesity and metabolic disease. *J. Exp. Biol.* **221**, jeb163881. doi:10.1242/jeb.163881
- Musselman, L. P., Fink, J. L., Narzinski, K., Ramachandran, P. V., Hathiramani, S. S., Cagan, R. L. and Baranski, T. J. (2011). A high-sugar diet produces obesity and insulin resistance in wild-type *Drosophila*. *Dis. Model. Mech.* **4**, 842-849. doi:10.1242/dmm.007948
- Nijhout, H. F., Riddiford, L. M., Mirth, C., Shingleton, A. W., Suzuki, Y. and Callier, V. (2014). The developmental control of size in insects. *Wiley Interdiscipl. Rev. Dev. Biol.* **3**, 113-134. doi:10.1002/wdev.124
- Pasco, M. Y. and Léopold, P. (2012). High sugar-induced insulin resistance in *Drosophila* relies on the Lipocalin Neural Lazarillo. *PLoS ONE* **7**, e36583. doi:10.1371/journal.pone.0036583
- Patel, P. H., Thapar, N., Guo, L., Martinez, M., Maris, J., Gau, C.-L., Lengyel, J. A. and Tamanoi, F. (2003). *Drosophila* Rheb GTPase is required for cell cycle progression and cell growth. *J. Cell Sci.* **116**, 3601-3610. doi:10.1242/jcs.00661



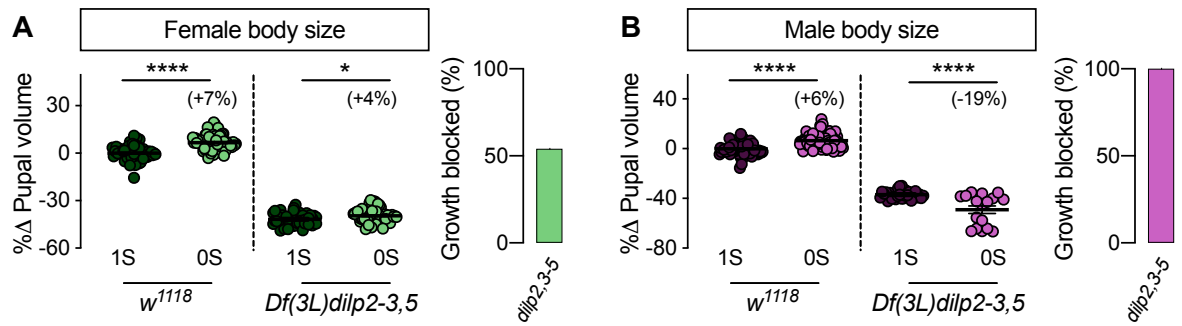
- Poltilove, R. M. K., Jacobs, A. R., Haft, C. R., Xu, P. and Taylor, S. I.** (2000). Characterization of *Drosophila* insulin receptor substrate. *J. Biol. Chem.* **275**, 23346-23354. doi:10.1074/jbc.M003579200
- Puertollano, R.** (2014). mTOR and lysosome regulation. *F1000Prime Rep.* **6**, 52. doi:10.12703/P6-52
- Puig, O. and Tjian, R.** (2005). Transcriptional feedback control of insulin receptor by dFOXO/FOXO1. *Genes Dev.* **19**, 2435-2446. doi:10.1101/gad.1340505
- Radimerski, T., Montagne, J., Hemmings-Mieszczak, M. and Thomas, G.** (2002). Lethality of *Drosophila* lacking TSC tumor suppressor function rescued by reducing dS6K signaling. *Genes Dev.* **16**, 2627-2632. doi:10.1101/gad.239102
- Reis, T.** (2016). Effects of synthetic diets enriched in specific nutrients on *Drosophila* development, body fat, and lifespan. *PLoS ONE* **11**, e0146758. doi:10.1371/journal.pone.0146758
- Rideout, E. J., Marshall, L. and Grewal, S. S.** (2012). *Drosophila* RNA polymerase III repressor Maf1 controls body size and developmental timing by modulating tRNAiMet synthesis and systemic insulin signaling. *Proc. Natl. Acad. Sci. USA* **109**, 1139-1144. doi:10.1073/pnas.1113311109
- Rideout, E. J., Narsaiya, M. S. and Grewal, S. S.** (2015). The sex determination gene transformer regulates male-female differences in *Drosophila* body size. *PLoS Genet.* **11**, e1005683. doi:10.1371/journal.pgen.1005683
- Rintelen, F., Stocker, H., Thomas, G. and Hafen, E.** (2001). PDK1 regulates growth through Akt and S6K in *Drosophila*. *Proc. Natl. Acad. Sci. USA* **98**, 15020-15025. doi:10.1073/pnas.011318098
- Schindelin, J., Arganda-Carreras, I., Frise, E., Kaynig, V., Longair, M., Pietzsch, T., Preibisch, S., Rueden, C., Saalfeld, S., Schmid, B. et al.** (2012). Fiji: an open-source platform for biological-image analysis. *Nat. Methods* **9**, 676-682. doi:10.1038/nmeth.2019
- Shingleton, A. W., Masandika, J. R., Thorsen, L. S., Zhu, Y. and Mirth, C. K.** (2017). The sex-specific effects of diet quality versus quantity on morphology in *Drosophila melanogaster*. *R. Soc. Open Sci.* **4**, 170375. doi:10.1098/rsos.170375
- Stillwell, R. C., Blanckenhorn, W. U., Teder, T., Davidowitz, G. and Fox, C. W.** (2010). Sex differences in phenotypic plasticity affect variation in sexual size dimorphism in insects: from physiology to evolution. *Annu. Rev. Entomol.* **55**, 227-245. doi:10.1146/annurev-ento-112408-085500
- Teder, T. and Tammaru, T.** (2005). Sexual size dimorphism within species increases with body size in insects. *Oikos* **108**, 321-334. doi:10.1111/j.0030-1299.2005.13609.x
- Teleman, A. A.** (2010). Molecular mechanisms of metabolic regulation by insulin in *Drosophila*. *Biochem. J.* **425**, 13-26. doi:10.1042/BJ20091181
- Teleman, A. A., Hietakangas, V., Sayadian, A. C. and Cohen, S. M.** (2008). Nutritional control of protein biosynthetic capacity by insulin via Myc in *Drosophila*. *Cell Metab.* **7**, 21-32. doi:10.1016/j.cmet.2007.11.010
- Tennesen, J. M., Barry, W. E., Cox, J. and Thummel, C. S.** (2014). Methods for studying metabolism in *Drosophila*. *Methods* **68**, 105-115. doi:10.1016/j.ymeth.2014.02.034
- Terada, N., Takase, K., Papst, P., Nairn, A. C. and Gelfand, E. W.** (1995). Rapamycin inhibits ribosomal protein synthesis and induces G1 prolongation in mitogen-activated T lymphocytes. *J. Immunol.* **155**, 3418-3426.
- Thurmond, J., Goodman, J. L., Strelets, V. B., Attrill, H., Gramates, L. S., Marygold, S. J., Matthews, B. B., Millburn, G., Antonazzo, G., Trovisco, V. et al.** (2018). FlyBase 2.0: the next generation. *Nucleic Acids Res.* **47**, D759-D765. doi:10.1093/nar/gky1003
- Tiebe, M., Lutz, M., De La Garza, A., Buechling, T., Boutros, M. and Teleman, A. A.** (2015). REPTOR and REPTOR-BP regulate organismal metabolism and transcription downstream of TORC1. *Dev. Cell* **33**, 272-284. doi:10.1016/j.devcel.2015.03.013
- Wat, L. W., Chao, C., Bartlett, R., Buchanan, J. L., Millington, J. W., Chih, H. J., Chowdhury, Z. S., Biswas, P., Huang, V., Shin, L. J. et al.** (2020). A role for triglyceride lipase brummer in the regulation of sex differences in *Drosophila* fat storage and breakdown. *PLoS Biol.* **18**, e3000595. doi:10.1371/journal.pbio.3000595
- Webb, A. E., Kundaje, A. and Brunet, A.** (2016). Characterization of the direct targets of FOXO transcription factors throughout evolution. *Aging Cell* **15**, 673-685. doi:10.1111/accel.12479
- Wullschleger, S., Loewith, R. and Hall, M. N.** (2006). TOR signaling in growth and metabolism. *Cell* **124**, 471-484. doi:10.1016/j.cell.2006.01.016
- Yki-Järvinen, H.** (1984). Sex and insulin sensitivity. *Metabolism* **33**, 1011-1015. doi:10.1016/0026-0495(84)90229-4
- Zhang, H., Stallock, J. P., Ng, J. C., Reinhard, C. and Neufeld, T. P.** (2000). Regulation of cellular growth by the *Drosophila* target of rapamycin dTOR. *Genes Dev.* **14**, 2712-2724. doi:10.1101/gad.835000
- Zinke, I., Schütz, C. S., Katzenberger, J. D., Bauer, M. and Pankratz, M. J.** (2002). Nutrient control of gene expression in *Drosophila*: microarray analysis of starvation and sugar-dependent response. *EMBO J.* **21**, 6162-6173. doi:10.1093/emboj/cdf600



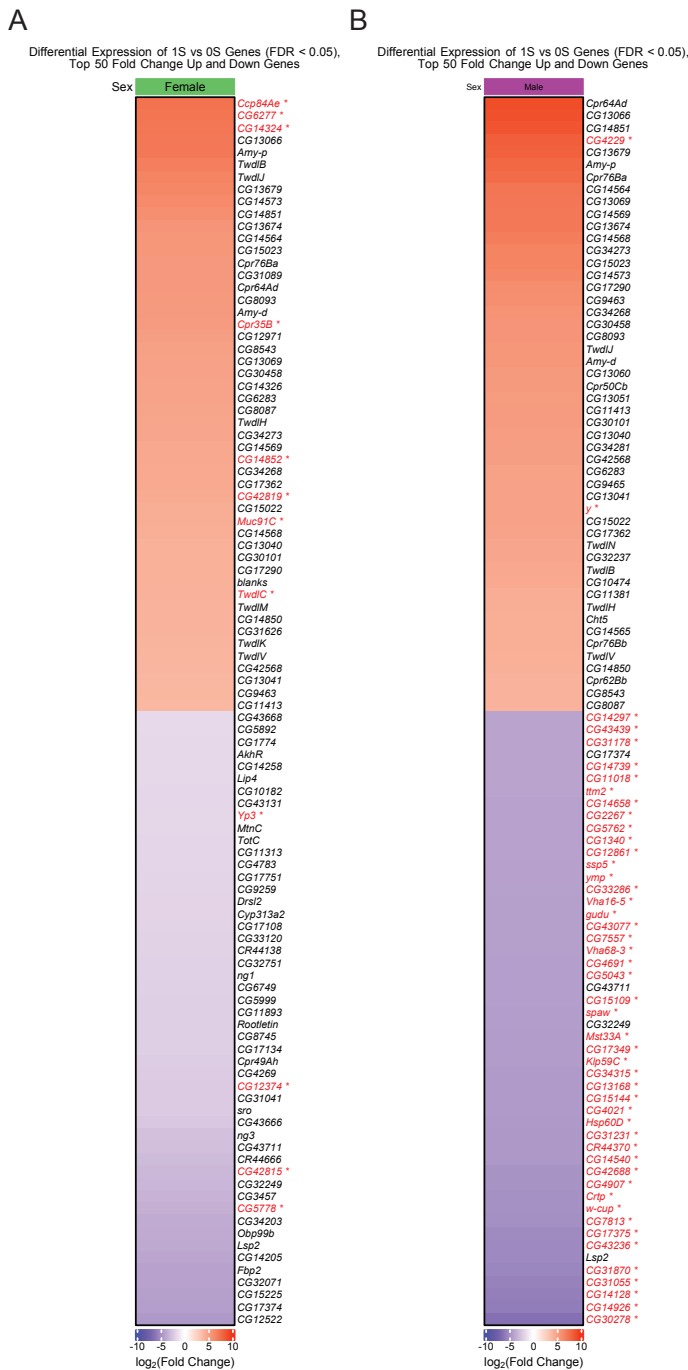
**Fig. S1. Sex determination gene expression in sexed larvae.** (A) mRNA levels of sex-specific isoforms of sex determination genes in male and female larvae (Student's *t* test). Females are expected to show expression of the female-specific isoforms of *transformer* (*tra<sup>F</sup>*) and *doublesex* (*dsx<sup>F</sup>*), whereas males are expected to show expression of the male-specific isoform of *doublesex* (*dsx<sup>M</sup>*). \*\*\*\*  $p < 0.0001$ ; error bars indicate SEM. *p*-values, samples sizes, and statistical tests are in Table S1.



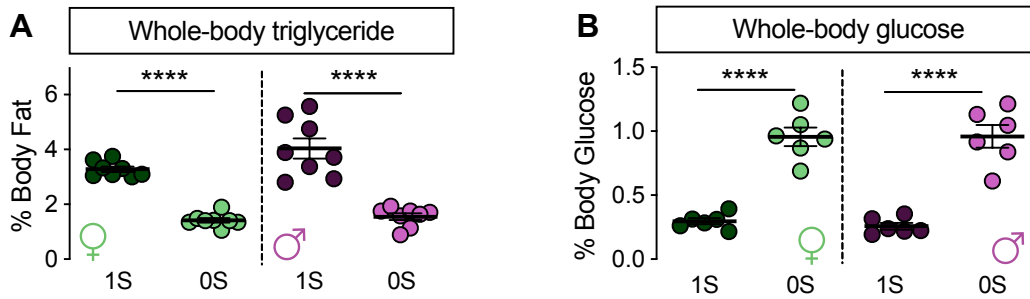
**Fig. S2. Male-biased requirement for IIS in promoting the low sugar-induced increase in body size.** (A) Pupal volume in *w<sup>1118</sup>* and *InR<sup>E19/+</sup>* females cultured on 1S or 0S (two-way ANOVA followed by Tukey HSD test).  $n = 27-61$ . (B) Pupal volume in *w<sup>1118</sup>* and *InR<sup>E19/+</sup>* males cultured on 1S or 0S (two-way ANOVA followed by Tukey HSD test).  $n = 48-74$ . (C) Pupal volume in *w<sup>1118</sup>* and *InR<sup>E19/+</sup>* females cultured on 1S or 0S (two-way ANOVA followed by Tukey HSD test).  $n = 26-73$ . (D) Pupal volume in *w<sup>1118</sup>* and *InR<sup>E19/+</sup>* males cultured on 1S or 0S (two-way ANOVA followed by Tukey HSD test).  $n = 45-51$ . To calculate sex:diet:genotype interactions three-way ANOVAs were used. \*\*\*  $p < 0.001$ ; \*\*\*\*  $p < 0.0001$ ; ns indicates not significant; error bars indicate SEM. To make percentage change pupal volume whole numbers, decimals  $< 0.5$  were rounded down, and decimals  $> 0.5$  were rounded up. *p*-values, samples sizes, and statistical tests are in Table S1.



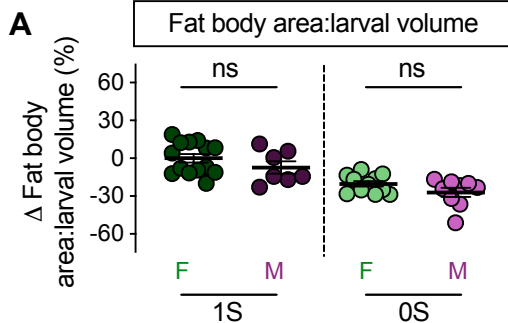
**Fig. S3. Sex-biased requirement for *Drosophila* insulin-like peptides in promoting the low sugar-induced increase in body size.** (A) Pupal volume in *w<sup>1118</sup>* and *dilp2-3,5* females cultured on 1S or 0S (two-way ANOVA followed by Tukey HSD test). n = 50-69. (B) Pupal volume in *w<sup>1118</sup>* and *dilp2-3,5* males cultured on 1S or 0S (two-way ANOVA followed by Tukey HSD test). n = 17-97. To calculate sex:diet:genotype interactions three-way ANOVAs were used. \* p<0.05; \*\*\*\* p<0.0001; ns indicates not significant; error bars indicate SEM. To make percentage change pupal volume whole numbers, decimals <0.5 were rounded down, and decimals >0.5 were rounded up. p-values, samples sizes, and statistical tests are in Table S1.



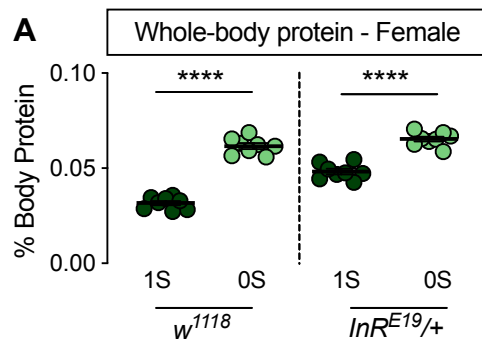
**Fig. S4. Sex-specific changes in gene expression in response to a low sugar diet.** (A) Top 50 differentially expressed upregulated and downregulated genes in females reared on a 0S diet. Differentially expressed genes unique to females are labelled in red. (B) Top 50 differentially expressed upregulated and downregulated genes in males reared on a 0S diet. Differentially expressed genes unique to males are labelled in red. A list of all differentially expressed genes is provided in Table S2.



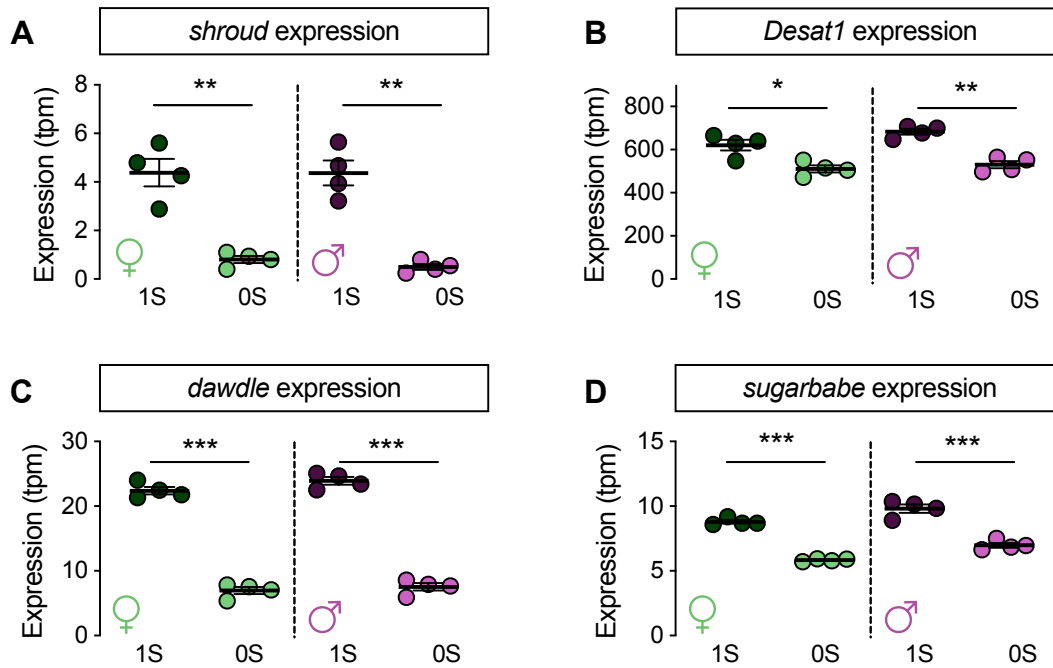
**Fig. S5. Non-sex-specific changes to whole body triglyceride and glucose levels in larvae raised on a low-sugar diet.** (A) Whole-body triglyceride levels in  $w^{1118}$  female and male larvae reared on 1S or 0S (Student's  $t$  test).  $n = 8$  biological replicates. (B) Whole-body glucose levels in  $w^{1118}$  female and male larvae cultured on 1S or 0S (Student's  $t$  test).  $n = 6$  biological replicates. \*\*\*\*  $p < 0.0001$ ; error bars indicate SEM.  $p$ -values, samples sizes, and statistical tests are in Table S1.



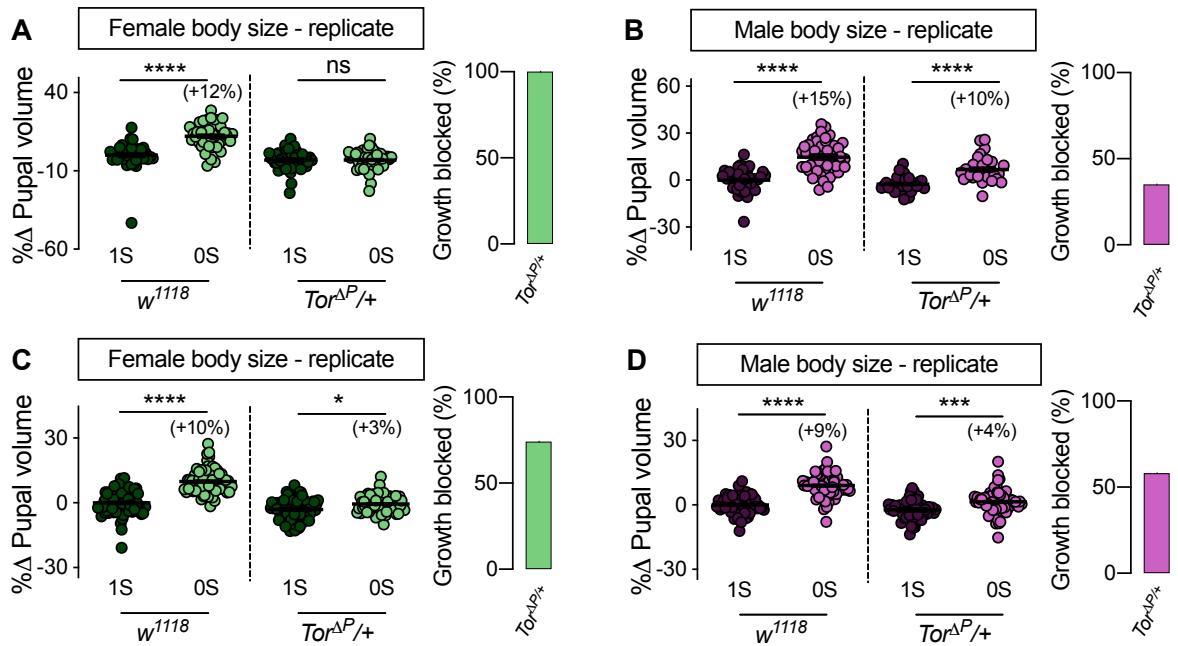
**Fig. S6. Scaling between fat body area and body size does not differ between males and females reared on 0S or 1S.** (A) The ratio of fat body area to larval volume is not different between females and males reared on either 1S or 0S (Student's  $t$  test).  $n = 7-14$ . ns indicates not significant; error bars indicate SEM.  $p$ -values, samples sizes, and statistical tests are in Table S1.



**Fig. S7. Reduced IIS function does not block the female-specific increase in whole-body protein in 0S.** (A) Whole-body protein levels in  $w^{1118}$  and  $InR^{E19/+}$  female larvae reared on 1S or 0S.  $n = 8$  biological replicates (two-way ANOVA followed by Tukey HSD test). \*\*\*\*  $p < 0.0001$ ; ns indicates not significant; error bars indicate SEM.  $p$ -values, sample sizes, and statistical tests are in Table S1.

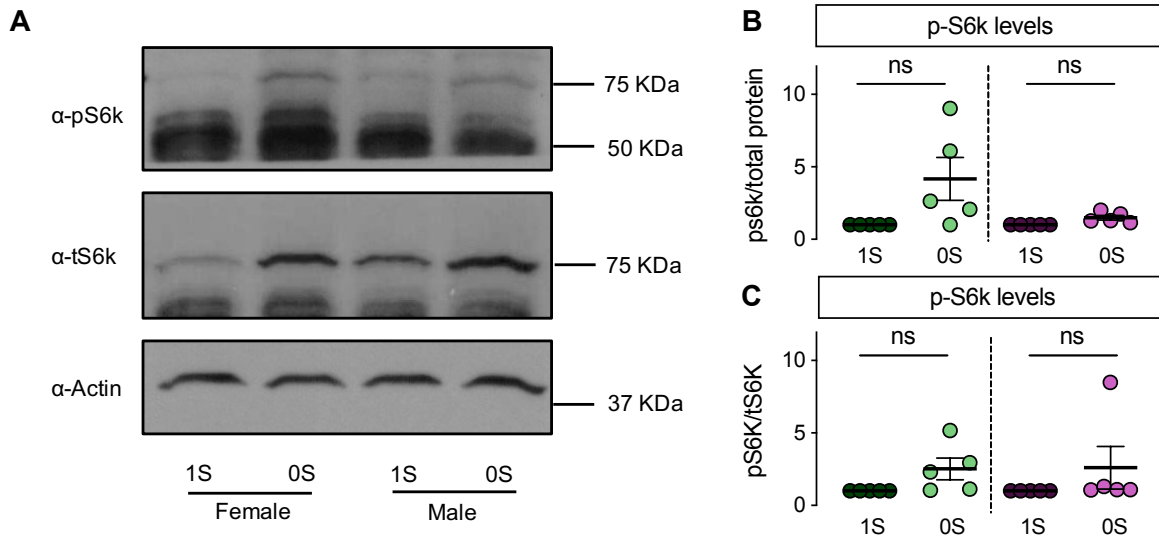


**Fig. S8. Non-sex-specific changes to *Mondobigmax* target expression in larvae raised on a low-sugar diet.** (A) Expression of *shroud* in females and males raised in 1S and 0S from RNA-seq data (Analyzed using adjusted  $p$  values calculated in DESeq2). (B) Expression of *Desat1* in females and males raised in 1S and 0S from RNA-seq data (Analyzed using adjusted  $p$  values calculated in DESeq2). (C) Expression of *dawdle* in females and males raised in 1S and 0S from RNA-seq data (Analyzed using adjusted  $p$  values calculated in DESeq2). (D) Expression of *sugarbabe* in females and males raised in 1S and 0S from RNA-seq data (Analyzed using adjusted  $p$  values calculated in DESeq2). \*\*  $p < 0.01$ ; \*\*\*  $p < 0.001$ ; ns indicates not significant; error bars indicate SEM.  $p$ -values, sample sizes, and statistical tests are in Table S1.



**Fig. S9. Female-biased requirement for Tor in regulating the low sugar-induced increase in body size.** (A) Pupal volume in  $w^{1118}$  and  $Tor^{\Delta P/+}$  females cultured on 1S or 0S (two-way ANOVA followed by Tukey HSD test).  $n = 39-53$ . (B) Pupal volume in  $w^{1118}$  and  $Tor^{\Delta P/+}$  males cultured on 1S or 0S (two-way ANOVA followed by Tukey HSD test).  $n = 29-49$ . (C) Pupal volume in  $w^{1118}$  and  $Tor^{\Delta P/+}$  females cultured on 1S or 0S (two-way ANOVA followed by Tukey HSD test).  $n = 49-61$ . (D) Pupal volume in  $w^{1118}$  and  $Tor^{\Delta P/+}$  males cultured on 1S or 0S (two-way ANOVA followed by Tukey HSD test).  $n = 56-74$ . To calculate sex:diet:genotype interactions three-way ANOVAs were used. \*\*\*  $p < 0.001$ ; \*\*\*\*  $p < 0.0001$ ; ns indicates not significant; error bars indicate SEM. To make percent change in pupal volume whole numbers, decimals  $< 0.5$  were rounded down, and decimals  $> 0.5$  were rounded up.  $p$ -values, sample sizes, and statistical tests are in Table S1.





**Fig. S10. Non-sex-specific trend toward increased phosphorylated S6k in a low sugar diet.** (A) Representative blots of phospho-S6k, total S6K, and actin in male and female larvae raised in 1S or 0S diets. (B) Quantification of p-S6k/total protein levels in male and female larvae raised in 1S or 0S (Wilcoxon signed rank test). (C) Quantification of p-S6K/t-S6k levels in 1S or 0S (Wilcoxon signed rank test). \*\*  $p < 0.01$ ; ns indicates not significant; error bars indicate SEM.  $p$ -values, samples sizes, and statistical tests are in Table S1.

**Table S1. Manuscript statistical analyses and *P*-values.**

[Click here to download Table S1](#)

**Table S2. Differentially expressed genes from RNA-seq analysis of low-sugar diet-induced changes to gene expression.**

[Click here to download Table S2](#)

**Table S3. Raw values for all data collected in the manuscript.**

[Click here to download Table S3](#)

**Table S4. Recipes for all diets used in the manuscript.**

[Click here to download Table S4](#)

**Table S5. Primer list for all qPCR in the manuscript.**

[Click here to download Table S5](#)